

Learning and Policy Making in Occupational Safety Using A Dynamic Simulation

Jonathan D. Moizer¹ and Ian Moffatt²

¹Plymouth Business School, University of Plymouth, England,
E-mail: Jonathan.Moizer@pbs.plym.ac.uk;

²Department of Environmental Science, University of Stirling, Scotland
E-mail: Ian.Moffatt@stir.ac.uk.

ABSTRACT: *Occupational safety is a complex phenomenon. If occupational safety management is to be successful, both the systematic and the systemic aspects of safety need to be understood. System dynamics modelling appears to be an appropriate methodology for exploring the array of occupational safety strategies open to employers. This paper summarises the process of developing, then empirically testing a dynamic simulation model of occupational safety management in an industrial setting. The empirical validity and pedagogic utility of the system dynamics model was evaluated using an interview with the managers of the firm hosting the empirical testing of the model. The utility and effectiveness of the model was further explored through modelling a number of safety scenarios. The outcome of this research indicates that the occupational safety model has the capability for acting as an instruction tool to improve understanding of occupational safety and also as an aid to policy making.*

Keywords: System dynamics, safety management systems, safety strategy, safety policy.

BACKGROUND TO THE OCCUPATIONAL SAFETY STUDY

Contemporary United Kingdom (UK) health and safety legislation encourages self-regulation and active management of health and safety at work. Employers are responsible for managing the risks in the workplace that they create, rather than simply seeking to comply with specific health and safety regulations. In particular they are required to develop and document their occupational safety management systems (SMS). The onus now is on the employer to take practicable action to secure safe and healthy workplaces, along with maintenance of the systems to ensure their continuation.

Despite improvements in occupational health and safety in recent years, there are still unacceptably high incidences of occupational accidents and illness. As well as the physical and mental costs to individuals, the cost to business of the average UK accident is now estimated to be as high as £3,500 (Davies, 1998). Waring (1996) suggests that a major problem may lie with the content of many health and safety management publications. Often they are narrow and prescriptive and can give the impression that success can be delivered if a particular systematic ‘formula’ is acted upon. If health and safety management systems are to be exploited to good effect, then both the systematic and systemic aspects of health and safety need to be understood. The use of models to explore and understand the consequences of decisions before action is taken may prove to be valuable where firms seek to evaluate alternative occupational safety strategies.

It appears that the established modelling methodologies may not be suitable for exploring occupational safety strategies as they neither capture the dynamic behaviour of the complex problem of accidents at work, nor identify the causal feedback structure contributing to that behaviour. This paper will describe the development of a dynamic simulation model of occupational safety strategy using system dynamics, and its testing in an industrial setting. Consideration is given to the future of the model as an aid for safety policy making and learning across a range of firms.

THE MODEL BUILDING PROCESS

The purpose of the study was firstly to build a generic occupational safety model (GOSM) to show how policies could be designed to reduce both accidents and the costs of maintaining an effective SMS; and secondly to empirically test the GOSM as a real world occupational safety model (RWOSM). A successful study would offer scope for the GOSM to be re-parameterised and transferred between different employing organisations.

A rigorous model building process was followed which was transparent, iterative in nature, and emphasised a range of structural, behavioural and policy tests. This process is illustrated in Figure 1 (validation tests are emphasised using italics, and where numbers are parenthesised this represents the re-application of a validation test). The model was developed in three distinctive phases: ‘conceptualisation’, ‘analysis’ and ‘evaluation’.

Within these three broad phases, a number of activities were conducted. These activities were informed by mental, written and numerical data sources from beyond and within the host firm for the study. A fourth phase: 'implementation' has yet to be started.

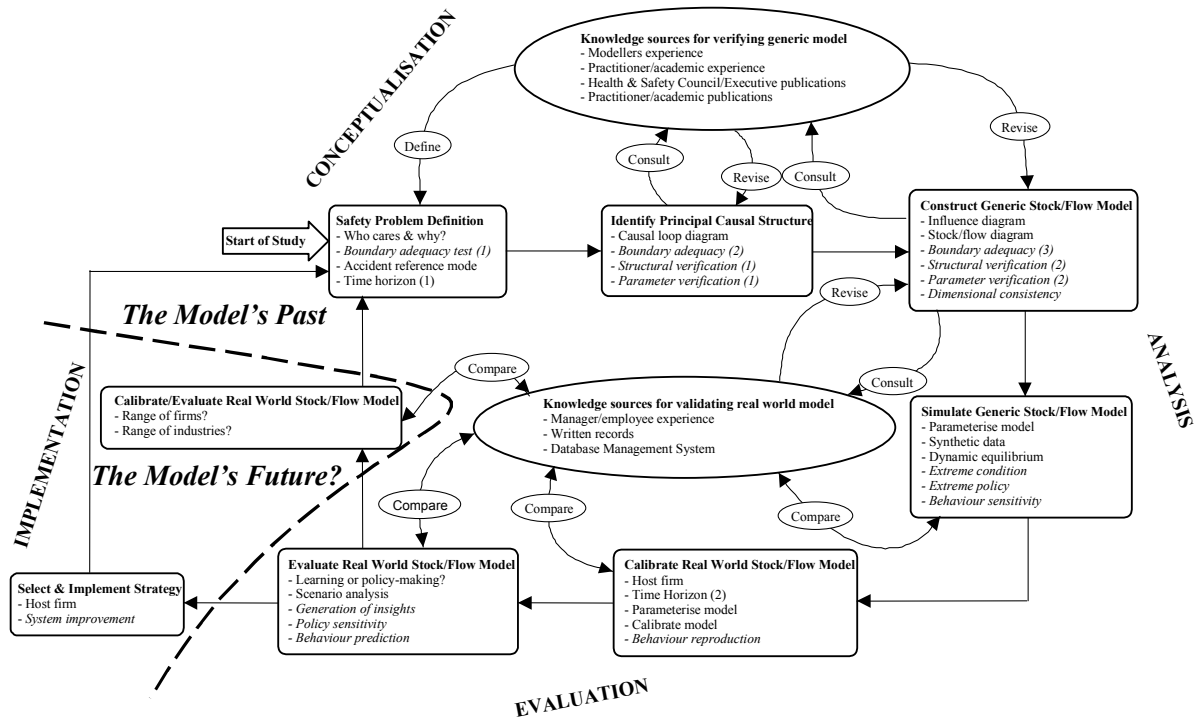


Figure 1: The Occupational Safety Modelling Process

MODEL CONCEPTUALISATION

The model conceptualisation phase consisted of defining a dynamic safety problem and identifying the causal structure likely to be contributing to the problem. When testing system dynamics models with real firms, the convention is to develop the study with the owners of the problem, or at least to consult them on a regular basis (see Lyneis, 1999; Homer, 1996, 1997). At the onset of the study there was no specific historical reference mode of behaviour to examine, nor was there a problem owner to consult. Consequently, if a reference mode of behaviour for the study could be set, and the causal structure thought to contribute towards its behaviour verified, this would require the investigation of a range of knowledge sources. Forrester (1980) identified three types of data sources for system dynamics models: mental, written and numerical.

Knowledge Sources for Verifying Generic Occupational Safety Model

- The mental store of data encompassed: the personal assumptions of the modeller grounded in practical experience, and the insights and experiences of safety practitioners and academics.
- The written store of data was rich and varied and included: Health and Safety Executive (HSE) publications (guiding legal compliance and recommend good occupational safety practice); practitioner magazines (containing developments in safety practice), and academic journals (outlining the findings of safety studies and proposing theoretical safety models and frameworks).
- Numerical safety data was available from many sources including: the Health and Safety Council (HSC) publications (annual UK occupational accident and illness statistics); the HSE (estimates of the costs to the UK economy of occupational accidents and illness); and practitioner and academic publications (safety opinion and practice survey results and findings of statistically based safety studies).

Defining the Safety Problem

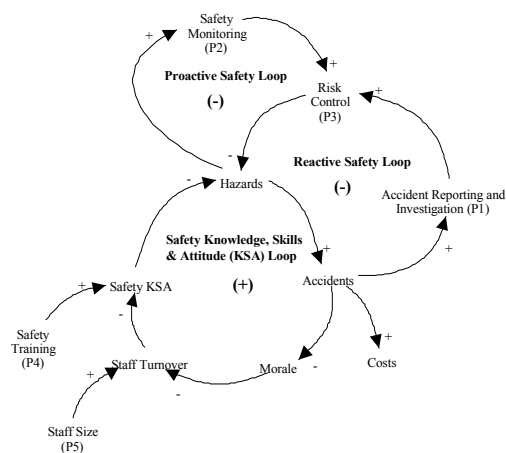
Many stakeholders (legislators, enforcers, trade unions, insurers, employers and employees) have an interest in the maintenance of robust occupational safety policies. It would appear though that employers and employees are the strongest stakeholders in occupational safety as they have the greatest control over accidents, and are affected most greatly by their consequences (physically, morally, financially and legally). The boundary of the

GOSM was limited to the single workplace in order to make it easier for a quantified system dynamics model to generate safety behaviour endogenously. This would allow the important policies and structure causing that behaviour to be more easily understood.

A reference mode of behaviour was set for the study. The HSC statistics on accident trends across UK workplaces was used to set the reference mode. Occupational accidents are both dynamic and certainly problematic. Accident patterns vary across different employing organisations, and an appropriate GOSM would need to be capable of reflecting more modes than just the historical national accident trend. A time horizon of three years was deemed adequate for examining the dynamics of a firm's SMS's behaviour. A shorter time frame could be unduly influenced by any short-term fluctuations; and evaluating safety performance over any longer period could cause the model users to raise questions concerning the accuracy or suitability of the model's predictions.

Identify Principal Causal Structure

A causal loop diagram (CLD) was developed with the intention of distilling and communicating ideas about the high-level structure and feedback present in occupational SMS's. A CLD emerged which appeared to capture adequately the underlying structure of the accident problem confronting firms. The CLD is outlined in Figure 2.



Three feedback loops exist, one reinforcing and two balancing. A total of five potential policy areas are also identified (P1-P5). Each feedback loop was traced through to structurally verify its contents and to describe its operation. The CLD was compared against real world observations or published literature. As the causal feedback structure began to emerge, the adequacy of the model boundary was re-considered. A number of mental simulations were performed to help establish whether this aggregated causal loop structure representing a SMS would be likely to replicate the accident reference mode. The overall polarity of the CLD was negative. This suggested that robust SMS's could be designed and implemented by employers to control accidents.

Figure 2: The basic causal feedback loop structure of the generic occupational safety model

MODEL ANALYSIS

The model analysis phase consisted of representing the structure of a SMS in a system dynamics stock/flow model (SFM). This model purported to represent occupational safety structure and policy that was evident or at least desirable across a range of firms. The model was labelled as the GOSM (see Moizer, 1999). The adequacy of its structure would only be established through analysing the behaviour generated by that generic structure.

Construct Generic Stock/Flow Diagram

The CLD was incrementally translated into a full SFM. A number of model sectors were identified and the stock/flow structure developed for each. These sectors were gradually linked together and further refinements to parts of the SFM ensued. Structural equations were assigned to all model variables.

A total of 51 parameters reside in the GOSM; of which 29 are constants, 16 are levels, and 6 are table functions. Thirty-one variables are also contained in the model, of which 19 are rates and 12 are auxiliaries. All the model components are endogenous to the system under study. Thirty-nine feedback loops are present in the GOSM. This is broken down into 13 reinforcing loops and 26 balancing loops. The dominance of balancing feedback loops (two-thirds: one-third) was in line with the CLD. This suggested that controlling the behaviour of the GOSM through policy parameter modification was possible.

Rigorous structural validation testing ensued. The structure of each equation and parameter was verified against both safety literature and the assumptions about relationships thought by experts to be present in real world occupational safety. Dimensional consistency tests were conducted on every model equation, not so much as to prove the equations dimensions were valid but rather to show that they were not mathematically incorrect. The structure of the model and its dimensions appeared to be consistent with those present or desirable in the SMS of a typical employer. The boundary of the GOSM guaranteed that the model structure was totally endogenous to the firm. This ensured that future policy implication tests allowed system behaviour to be generated by the policy decisions of the user, rather than emanating from an external source.

Simulate Generic Stock/Flow Model

A number of behavioural tests would be needed to further evaluate the validity of the model's structure. Synthetic data was used to parameterise the GOSM. Prior to any behavioural tests being performed, the GOSM was set to allow the 'base run' to simulate in a state of equilibrium. When conducting the behavioural tests, this would reduce the likelihood of an unanticipated shift in loop dominance, and also allow the exact effect of each parameter change to be measured clearly.

Extreme conditions and policy tests were used to determine whether the GOSM would behave reasonably when taken beyond its anticipated normal operating limits. These were achieved through modifying stocks or altering policy statements in an extreme way. The model did replicate the expected behaviour of a real occupational safety system faced with extreme conditions or policy circumstances (for example, where the labour force was set zero then there were zero accidents).

Parameter sensitivity tests could now be performed. These tests were concerned with identifying whether the GOSM was sensitive to certain parameter changes such as training, labour force size or accident risk; and whether the numerical and behavioural changes exhibited by the model would be acceptable in the system under study. Three types of parameter were tested for sensitivity: constants, initial values of stocks, and table functions. It was important in the design of the sensitivity analysis to account for some of the major limitations associated with parameter sensitivity testing. The principal practical limitation would be the number of manual changes to the parameters' values that could be feasibly made, recorded and analysed. Only single parameter changes were made at a time. This allowed each parameter's effect to be more precisely assessed.

Coyle (1978) published the idea of producing a performance index (PI) to measure system dynamics models. He suggested that a PI could be useful when comparing one simulation run with another. A PI is usually a single number summarising the whole performance of a model run. This can allow easy presentation of conclusions and also gives a uniform comparison of one run with another. This approach was modified and used to examine the sensitivity of the model to given sets of parameter sensitivity tests (see Moizer, 1999 for full details). A range of measures of parameter sensitivity would surely build more confidence in the models plausibility. These measures of a number of key output metrics behaviour included:

- making parameter change and noting final values;
- measuring the settling time back to equilibrium following a parameter disturbance; and
- measuring the maximum value achieved following a parameter disturbance.

System dynamics models are insensitive to most parameter changes, but are sensitive to a few parameters in a model of a system. Given this rule, Spearman's Rank Correlation Coefficient was used to rank and measure the strength of association between the sets of parameter sensitivity results. Parameters were then categorised as being high, medium or low sensitivity. The results of these tests could help with translating the GOSM into an operational model in two ways. Firstly, the more sensitive parameters identified would be more accuracy set when empirically testing the RWOSM. Secondly, the policies most likely to offer the greatest leverage over safety performance in the host firm were now also established. This would aid the search for effective policy scenarios. The most sensitive parameters found were associated with employment policies, those concerned with staff recruitment, retention and turnover; and the knowledge, skills and attitude of staff, rather than engineering control. This further added to plausibility of the model.

MODEL EVALUATION

The model evaluation phase involved validating the model with real world data derived from a host firm, and examining whether the RWOSM could:

- replicate the past behaviour of important metrics of a real occupational SMS;
- aid managers in learning about the nature of safety management; and
- assist managers with safety policy making.

Knowledge Sources for Validating Real World Model

- The mental store of data encompasses the insights and practical experiences of managers, supervisory staff and line employees.
- The written store of data was largely contained on a database management system (DBMS), and included training, risk assessment, safety inspection and accident records. Full minutes and actions emanating from safety committee meetings and documented safety procedures were also useful seams of written safety material.
- Numerical safety data overlapped with much of the written material on the DBMS. This included accident and hazard statistics, length of service of employees and training programmes.

Calibrate Real World Stock/Flow Model

If an operational system dynamics model is to be accepted by the managers of a host firm as a policy analysis tool, they will often expect it to replicate the past behaviour of the proposed system under study (Lyneis, 1999). The GOSM, being exploratory in nature, could offer an insight into the problem of occupational safety, but without empirical detail and sufficient calibration it would be difficult to get the managers of a real firm to even think about making specific safety policy decisions based on these insights. The GOSM was converted into an empirically based operational model. This was achieved by using safety data and experience derived from a host firm to develop a three-year historical representation of the key behaviour metrics of their SMS.

The first stage of developing the RWOSM involved the measurement and validation of all numerical parameter values in the model. The parameters were informed using hard data derived from the firm's DBMS and manual records; and more descriptive data obtained from discussions with managers and a survey of line employees. Many of the policies were found to be dynamic, and numerical time-series data would play a role in achieving a close historical match between model and reality.

The second stage concerned calibrating the RWOSM to replicate the past behaviour of the RWOSM. This was achieved by tuning the less measurable parameters and observing the closeness of fit between the actual and observed accident rate, and actual and observed distribution of hazards. These correspondences were measured using Theil's inequality statistic which identified whether the sources of error between observed and actual data and their composition were acceptable (see Sterman, 1984 for full guidance on method). Figure 3 compares the simulated and actual accidents.

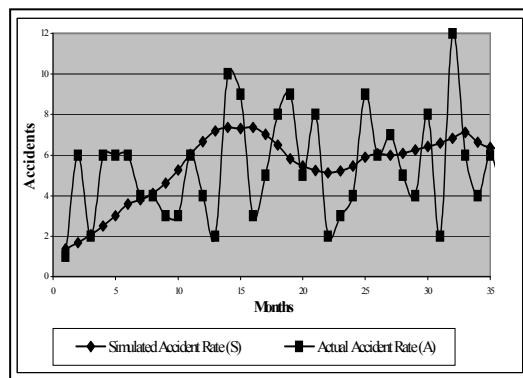


Figure 3: Simulated versus observed accident rate in the host firm over the previous three-year period

Evaluate Real World Stock/Flow Model

The RWOSM was built and subsequently validated with real data from a host firm with the intention of developing a means of improving insights into the real world problems of occupational safety. These insights could be brought about by learning about the effects of safety decisions, and/or through designing policies to improve safety system behaviour. The usefulness of the study would lie in showing the level of utility and effectiveness of the RWOSM as a policy-making and learning tool. A strong measure of its success would lie in whether the model was actually able to generate new insights or improve existing understanding about the nature of safety management in the firm.

Opinion on the model's uses as a policy making and/or learning tool was gathered through the use of an in-depth interview with a group of managers from within the host firm (see Moizer, 1997 for full description). Many of the explicit observations made by the group pointed to the model being more suitable as a tool for either demonstrating the effects of safety policy, or for helping people to learn more about their firm's safety management. There was acknowledgement that the simulation would still be of value in learning or even policy-making when set in an abstract context, although there was a greater appreciation of the model in its present real world form. Much of the underlying discussion pointed towards using the model to assist with policy evaluation. Suggestions were made concerning the introduction of other policy parameters into the model. On a cautious note, the lack of criticism levelled by the interviewees may show that their exposure to the RWOSM was too limited, not allowing them to comment adequately on the plausibility of the model's structure and equations. This may have stemmed from their exposure to a largely 'off the shelf' model.

Safety policy analysis was carried out to help better understand why the safety system of the firm behaved in a certain way. Policy experiments needed to be conducted to help design the best possible robust behaviour into the system. The only way to progress was to experiment with different policies, with the intention of designing a scenario suggesting how best to control both accident rates and safety costs in the firm. Some of the more sensitive policy parameters identified in the behavioural testing of the GOSM were numerically modified in order to explore, and then design a better SMS. Five scenarios were chosen, simulated and examined. These scenarios all had distinctive strategies, with some emphasising risk control and others focusing on staffing policies. The last scenario was achieved heuristically and consisted of a measures use of the full range of policy

options, and suggested that one could bring about a noticeable improvement in the accident rate, as well as a reduction in the costs of running the SMS in the firm.

MODEL IMPLEMENTATION

There is a great deal of scope for further work using the occupational safety model. The study to date has finished with the evaluation of a range of plausible safety scenarios for one host firm. If the managers of this firm and other firms placed a high measure of faith in the ability of the model to suggest improved safety performance, and implemented the recommended policies, the model's veracity could be readily tested.

Select and Implement Strategy

The managers of the host firm suggested that the model outputs had confirmed their suspicions that training, amongst a raft of other policies had the capacity to exert the most influence over the accident trend. They indicated that they were likely to increase the level of training within their firm. If the firm adopted this policy change, it could be revisited to see if the model's behaviour prediction held true. Forrester and Senge (1980) describe this as the ultimate test of a system dynamics model, to see whether the desirable policies found after exploring a model, when implemented actually improve real system behaviour.

Calibrate/Evaluate Real World Stock/Flow Model

The RWOSM was tested in only one firm. This does not confirm that the model can be applied to all workplaces. All it indicates is that it was successfully tested in one. Further confidence in the model could be built if it was tested in a number of different workplaces, and a range of plausible but different modes of safety behaviour could be exhibited. It could become evident as the model was applied to different workplaces that some of the structure may need to be overhauled, or even further structure introduced.

SUMMARY OF THE OCCUPATIONAL SAFETY MODELLING PROCESS

Using academic and practitioner literature, opinions of experts in the field of safety and personal assumptions, a generic system dynamics model of an occupational safety system was built. It was subsequently tested with data derived from an industrial setting. A number of alternative empirically based safety scenarios were explored and appropriate policy decisions illustrated. The opinions of users of the model were elicited in order to capture an understanding of the potential uses of the simulation as a pedagogic and decision-making aid. Suggestions have been made as to the further use of the model as an aid to firms across industry.

REFERENCES

- Coyle, R.G. (1978) 'An Approach to the Formulation of Equations for Performance Indices', *Dynamica*, **4**(2), pp.62-81.
- Davies, F. (1998) 'Safe Liaisons, Health and Safety in the Workplace: A Financial Times Guide', *Supplement to the Financial Times*, 22 October, pp.3-4.
- Forrester (1980) 'Information Sources for Modeling the National Economy', *Journal of the American Statistical Association* **75**(371), pp.555-574.
- Holmer, J.B. (1996) 'Why We Iterate: Scientific Modeling in Theory and Practice', *System Dynamics Review*, **12**(1), pp.1-20.
- Holmer, J.B. (1997) 'Structure, Data and Compelling Conclusions: Notes from the Field', *System Dynamics Review*, **13**(4), pp.289-310.
- Lyneis, J.M. (1999) 'System Dynamics for Business Strategy: A Phased Approach', *System Dynamics Review*, **15**(1), pp.37-70.
- Moizer, J.D. (1997) 'System Dynamic Modelling of Occupational Safety: More Suitable for Learning or Policy Making?' *The 1997 International System Dynamics Conference*, Istanbul, Turkey, Aug 1997, pp.69-72.
- Moizer J.D. (1999) 'System Dynamics Modelling of Occupational Safety: A Case Study Approach' *Unpublished Doctoral Dissertation*, University of Stirling.
- Sterman, J.D. (1984) 'Appropriate Summary Statistics for Evaluating the Historical Fit of System Dynamics Models', *Dynamica*, **10**(2), pp.51-66.
- Waring, A. (1996) *Safety Management Systems*, Chapman and Hall, London.