

49°30' 45' 50°00' 5' 15' 30' 45' 51°00'

19°00' 19°00' 19°00' 19°00' 19°00'

SERIES 1501 AIR SHEET NE 39-6 EDITION 1

POPULATED PLACES
Over 100,000 AR RIYAD
50,000 to 100,000 AL QATIF
10,000 to 50,000 Turayf
2,000 to 10,000 Al 'Uqayr
Less than 2,000 Quba

ROADS
Dual highway 4 LANES DUAL
All weather, hard surface More than two lanes wide 2 LANES
Two lanes wide
One lane wide
All weather, loose or light surface
More than two lanes wide 3 LANES
Two lanes wide
One lane wide
Fair or dry weather, loose surface
Cart track
Footpath, trail
Dune marker

RAILROADS
Normal gauge, single track 1.44m (4'3 1/2") Double track
Narrow gauge

BOUNDARIES
International
First-order administrative

OTHER FEATURES
Area name AL MHWAD
Mine or quarry
Campsite, Ruins, Watermill
School, Church, Landmark
Mosque, Madrasa, shrine
Small reservoir or cistern
Well, Perennial, Intermittent, Spring
Underground aqueduct with shafts
Salikha or Dry lake, Intermittent lake
Single line intermittent stream, Wadi
Marsh or swamp, Land subject to inundation
Mound, Levee
Mudflat, Distorted surface
Sand, flat or rolling, Crescent
Ripple, Lateral
Star, Mounds
Historical control point

HYDROGRAPHY
Rocks, uncovering or awash
Exposed wreck
Limit of danger, Reef
Foreshore flat
Depth curve, Lighthouse

TERRAIN ELEVATIONS
Spot elevation, normal, critical
HIGHEST KNOWN elevation is 2086 feet at the following coordinates:
Geographic: 18°00' N, 50°47' E
Grid: VV7891
± following elevation value indicates accuracy is not within 100 feet

AERODROMES (Military or Civil)
EDNA/501
Runway pattern known 725
Field limits and runway pattern unknown

HELIPORT
RADIO FACILITIES
VOR VORTAC
TACAN VOR/DME
RADIO RANGE LF/MF
MULTIPLE RADIO FACILITIES
CONTROLLED AIRSPACE
ADIZ

VISUAL AIDS AND OBSTRUCTIONS
ADIZ
Obstruction
1108 Elevation of obstruction top, above sea level
(259) Elevation of obstruction top, above ground level
Group obstruction
Radio facility obstruction
Power transmission line
Visual ground sign
Aero light, Marine light

CAUTION
Vertical obstructions, including powerlines, have been indicated from the most reliable sources available. However, there is no assurance that all obstructions or that they are located or heights are exact.

CAUTION
AIR INFORMATION CURRENT THROUGH
7 APRIL 1992
Consult NOTAMS and Flight Information Publications for the latest air information; the OMA Aeronautical Chart Updating Manual or MOD (U.K.) Aeronautical Chart Amendment document, for other chart revision information.

MAGNETIC VARIATION FOR 1990 IS APPROXIMATELY
1°00' EAST OVER THE ENTIRE AREA
(Annual rate of change 1" increase)

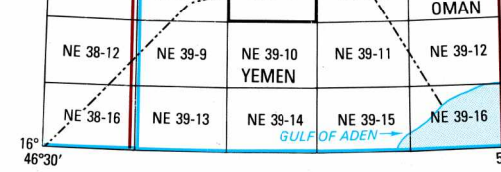
ATTENTION
THIS CHART CONTAINS
MAXIMUM ELEVATION FIGURES (MEF)
The Maximum Elevation Figures shown in quadrangles bounded by ticked lines of latitude and longitude are represented in THOUSANDS and HUNDREDS of feet above mean sea level. The MEF is based on information available concerning the highest known features in each quadrangle, including terrain and obstructions (trees, towers, antennas, etc.).

EXAMPLE: 12,500 feet
125

LOCATION DIAGRAM
Boundary Representation is Not Necessarily Authoritative
INDEX SHOWN IN RED/BROWN
INDEX SHOWN IN BLUE

Table with 4 columns: NE 38-16, NE 38-13, NE 38-14, NE 38-15, NE 38-16. Rows include SAUDI ARABIA, YEMEN, and ONMAN.

Prepared and published by the Defense Mapping Agency
Aerospace Center, St. Louis, Missouri.
Compiled April 1992.

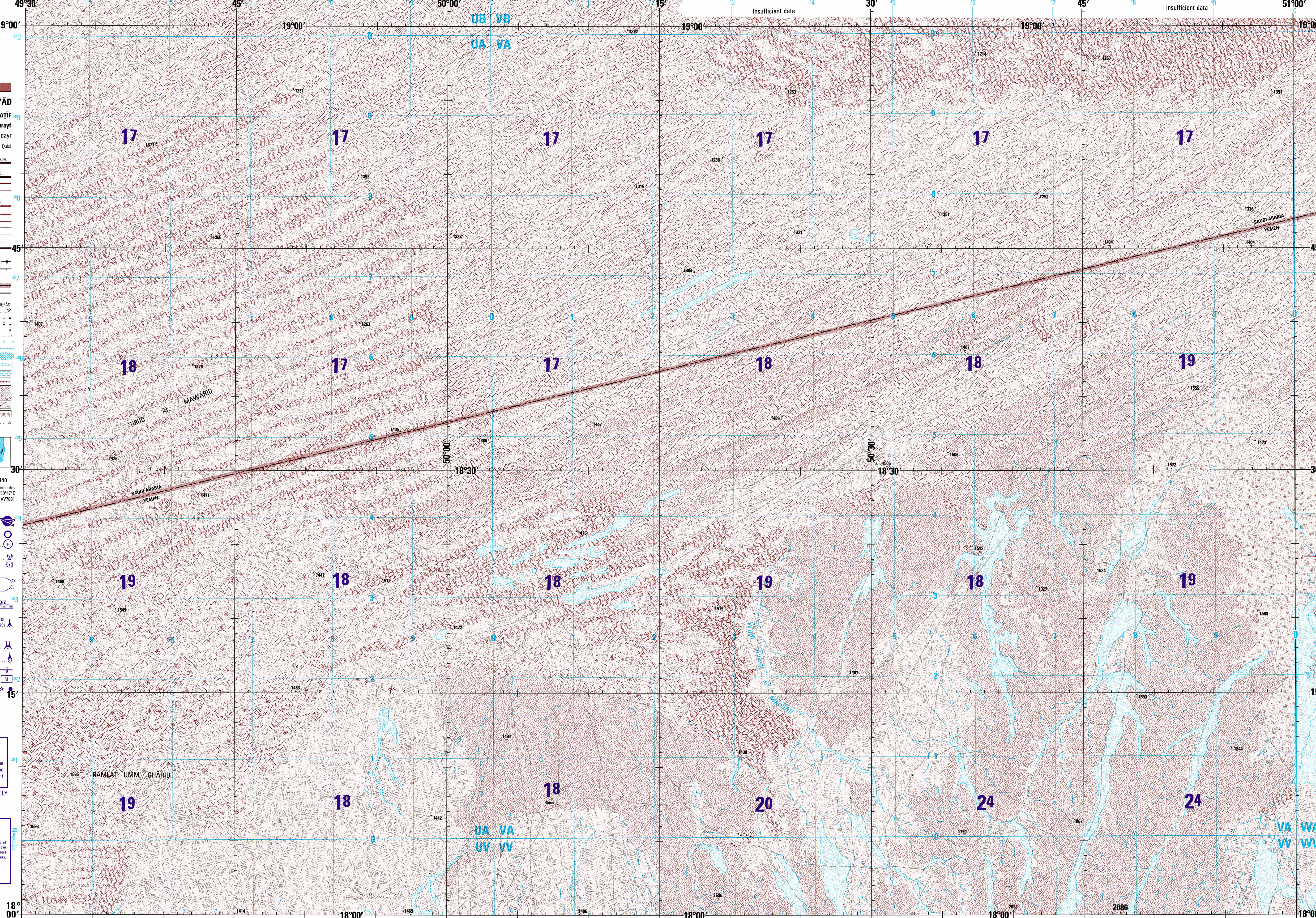


CONVERSION OF ELEVATIONS
FEET METERS
1000 305
900 274
800 244
700 214
600 183
500 152
400 122
300 91
200 61
100 31

SCALE 1:250,000
WADI 'AYWAT AL MANAHIL,
YEMEN; SAUDI ARABIA

SERIES 1501 AIR SHEET NE 39-6 EDITION 1

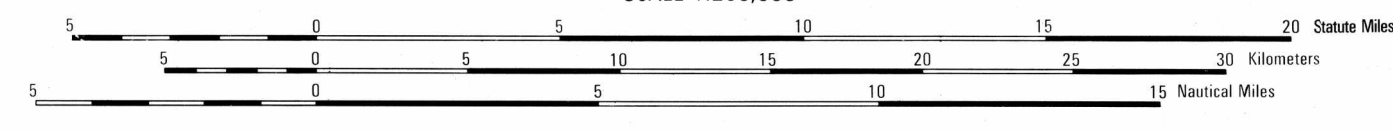
SERIES 1501 COMPANION SHEET IS EDITION 1



ELEVATIONS IN FEET
49°30' 45' 50°00' 5' 15' 30' 45' 51°00'

JOINT OPERATIONS GRAPHIC (AIR)

SCALE 1:250,000



MAXIMUM ELEVATION 2086 FEET

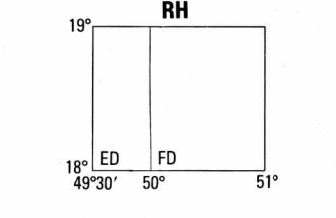
BLUE NUMBERED LINES INDICATE THE 10,000 METER UNIVERSAL TRANSVERSE MERCATOR GRID, ZONE 38, WORLD GEODETIC SYSTEM ELLIPSOID.

COORDINATE CONVERSION FROM WGS-84 DATUM TO EUROPEAN DATUM INTERNATIONAL ELLIPSOID
Grid: Subtract 14m. E., Add 147m. N.
Geographic: Subtract 0.4" Long., Add 4.6" Lat.

USERS SHOULD REFER TO CORRECTIONS, ADDITIONS AND COMMENTS TO THE NIMA OPERATIONAL HELP DESK:
1-800-455-0999 COMMERCIAL, 214-263-4844; TSN 698-9884; OR WRITE TO DIRECTOR, NATIONAL IMAGERY AND MAPPING AGENCY, ATTN: IS, MAIL STOP 1-98, 4600 SANGAMORE ROAD, BETHESDA, MD 20816-5003

GLOSSARY
Ramlat: dunes, sand area
'Uruq: dune region, dunes
Wadi: wadi

GEOREF BASIC 15° QUADRANGLE RH



RELIABILITY OF THIS GRAPHIC
PLOTTING ACCURACY 90% ASSURANCE
Horizontal Datum: World Geodetic System
Vertical Datum: Mean Sea Level
Transverse Mercator Projection

NOTES
No obstructions 200 feet or more above ground level are known to exist in this area.
On this graphic a lane is generally considered as being 8 feet (2.5 meters) in width.
BOUNDARY REPRESENTATION IS NOT NECESSARILY AUTHORITATIVE.
ALIGNMENT OF ALL BOUNDARIES IS APPROXIMATE.
Road classification should be referred to with caution.

NSN 7641014098964
NIMA Ref No. 1501ANE3906