

U.S. Department of the Interior U.S. Geological Survey

Historic Trail Map of the Trinidad 1° x 2° Quadrangle, Southern Colorado

By Glenn R. Scott 2001

Geologic Investigations Series I-2745 Pamphlet accompanies map

Prepared in cooperation with The Denver Public Library, Western History and Geology Department

The Concord Stagecoach

The Concord stagecoach had a capacity of 12-13 people... as many as nine passengers sat inside the coach...



(LEFT) A brand new Concord stagecoach photographed at the factory of Abbot, Downing and Company...

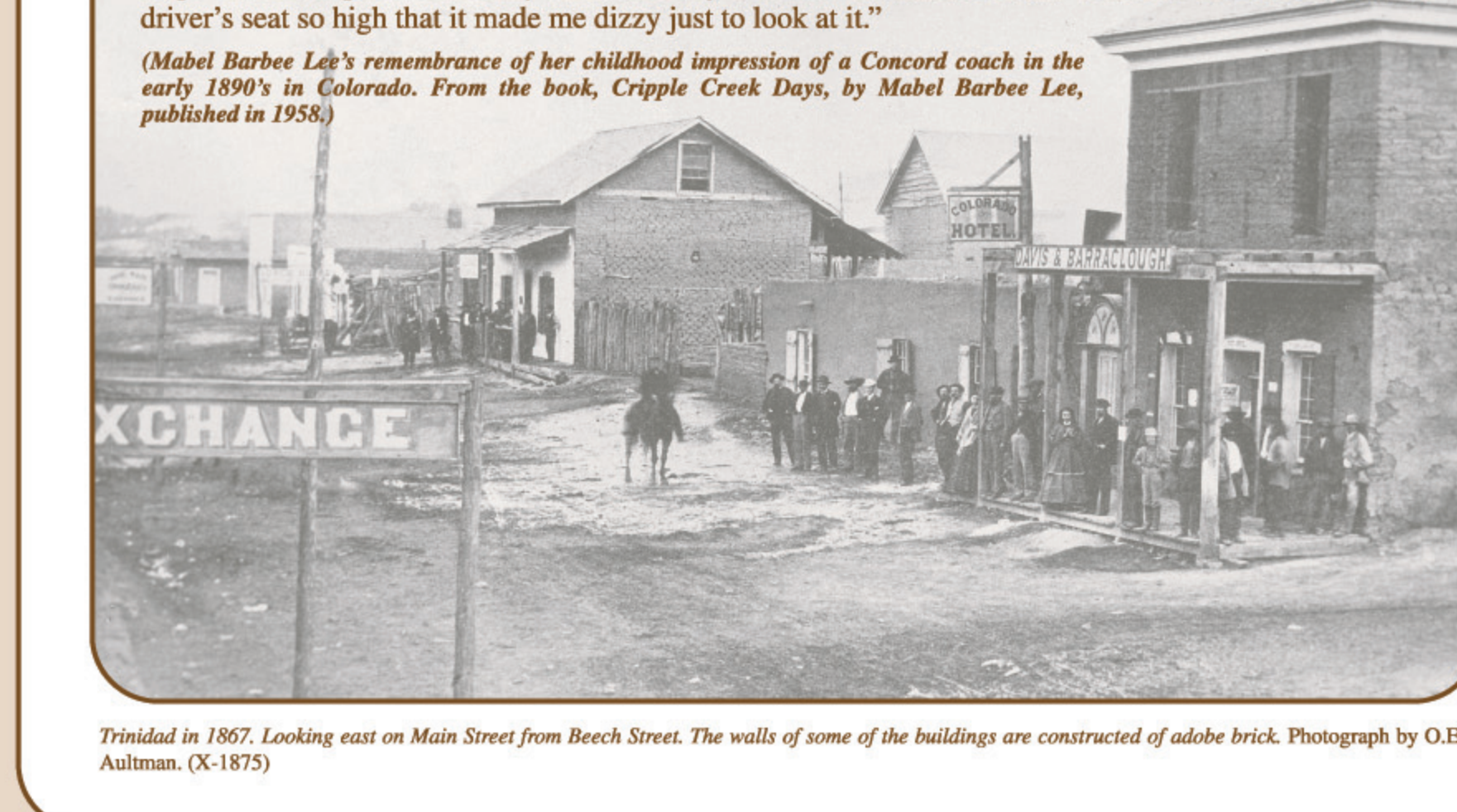
(BELOW) Unused passenger ticket for a round trip from Leadville to Trinidad on the Colorado & Southern Railway...

Abbot, Downing, and Company

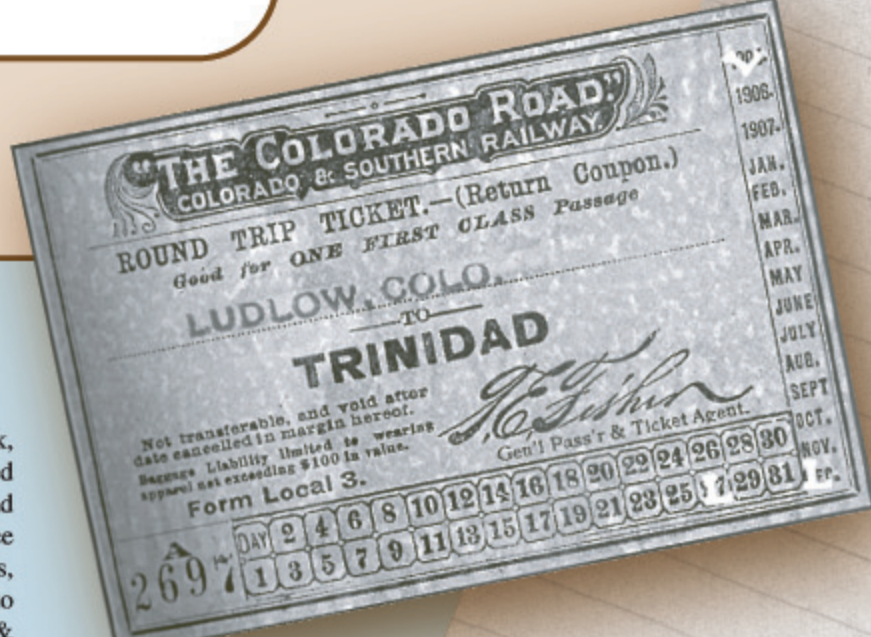
"On the horizon down the trail, a cloud of yellow dust appears... the stagecoach careens into town to the accompaniment of cracking whips, the barking of hysterical dogs, the squeak and rattle of the body and harness...

"The big Concord coach at last lumbered up the platform. I had never seen such an odd, top-heavy stage outside of pictures in fast libraries. Its body was closed, with doors and windows on both sides and a driver's seat so high that it made me dizzy just to look at it."

(Mabel Barber Lee's remembrance of her childhood impression of a Concord coach in the early 1890s in Colorado. From the book, Crooked Creek Days, by Mabel Barber Lee, published in 1959.)



Trinidad in 1887. Looking east on Main Street from Block Street. The walls of some of the buildings are constructed of adobe brick. Photograph by O.E. Ashman. (X-1875)



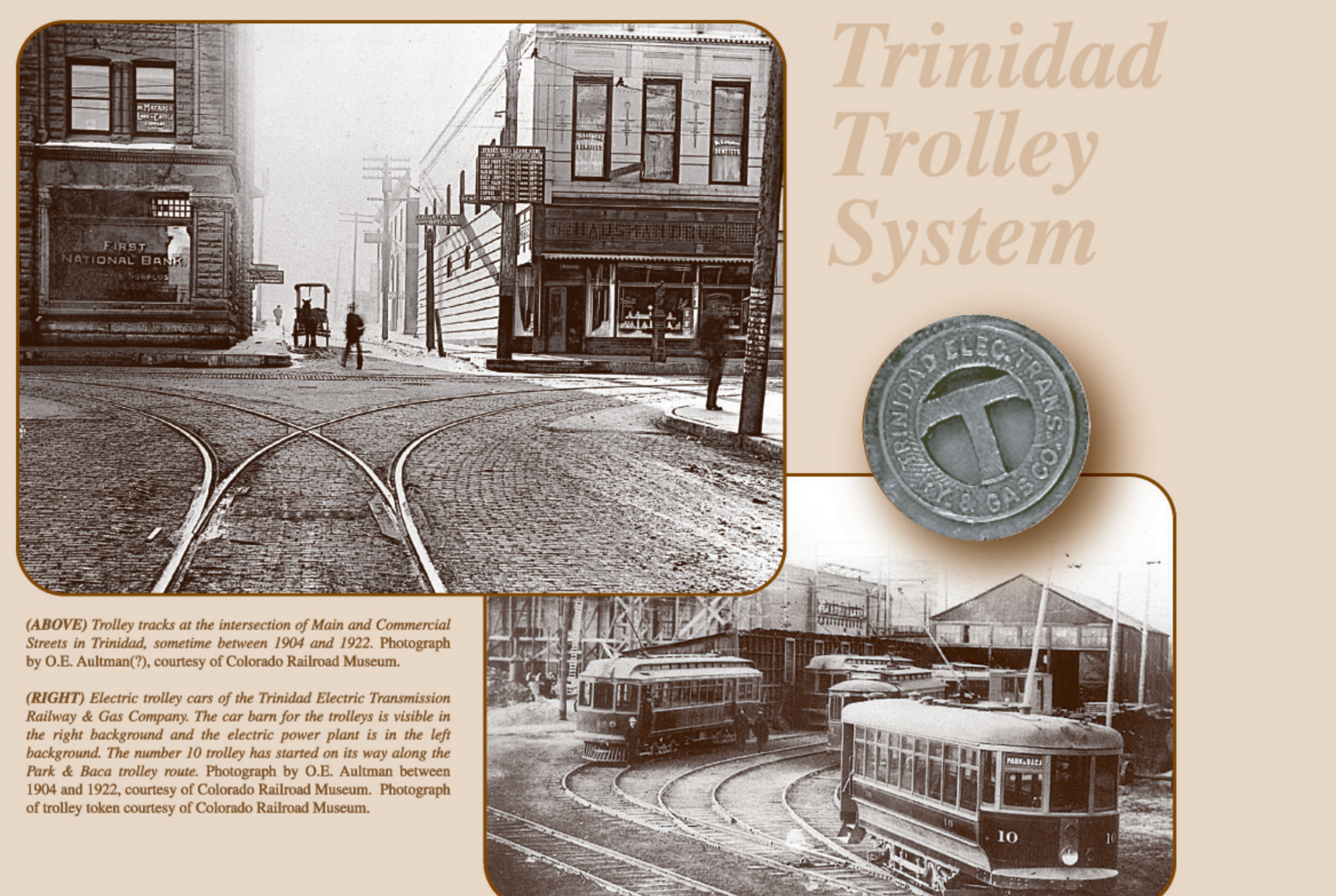
Trolleys in Trinidad

The Trinidad Street Railway was established in 1882 when horsecars began operating in town. By 1888 it had a mile and a half of track...



Brand new trolley car number 2 of the Trinidad Electric Tramway Railway & Gas Company. Electric trolley cars such as this one arrived on the lines that extended from Trinidad to the nearby communities of Colorado Springs, Florence, and Starkville. Photograph by O.E. Ashman in 1904 or 1905. Courtesy of Colorado Railroad Museum.

Trinidad Trolley System



(ABOVE) Trolley tracks at the intersection of Main and Commercial Streets in Trinidad, sometime between 1905 and 1910. Photograph by O.E. Ashman. (X-1875). (RIGHT) Electric trolley car of the Trinidad Electric Tramway Railway & Gas Company. The car here for the trolley is visible in the right foreground and the electric power plant is to the left background. The number 10 trolley has returned to its new livery in the Park at Base trolley car. Photograph by O.E. Ashman between 1904 and 1910. Courtesy of Colorado Railroad Museum. Photograph of trolley cars courtesy of Colorado Railroad Museum.



EXPLANATION TRAIL OR ROAD - Double where approximately located, quarter where indicated. Date of construction in years, construction of original routes are explained in pamphlet. Abbreviation "N.G." indicates narrow gauge. For more details about railroads, see the advertisement for the "Sources of Information" in this pamphlet.



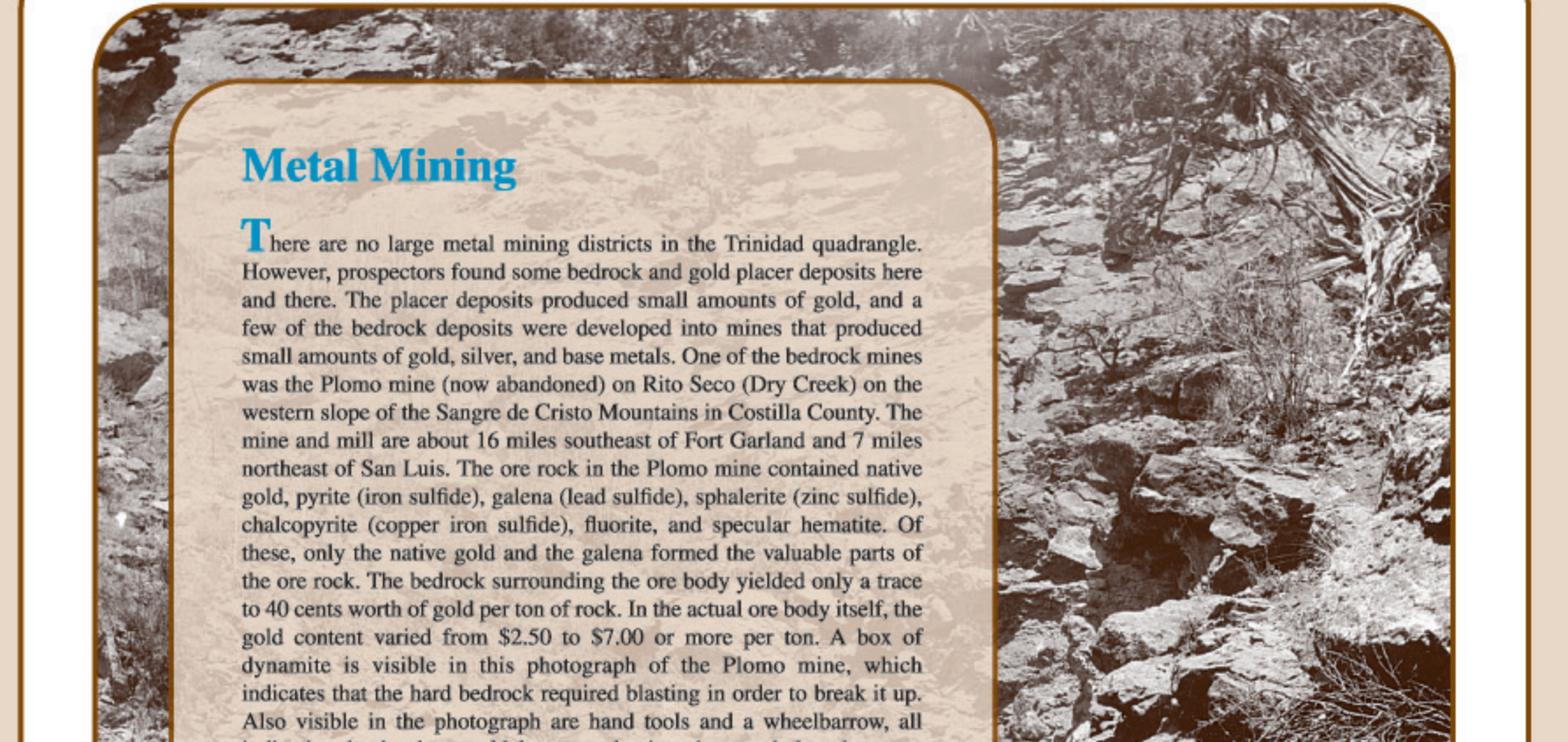
Inset Map Showing Location of the Trinidad Quadrangle in the Colorado & Southern Railway System.

Table with 3 columns: Item, Price, and Note. Includes items like 'DRY GOODS', 'SHOES', 'HATS'.

Base from U.S. Geological Survey, 1988. Projection and 10000 meter grid, UTM 18N. Contour Interval 100 METERS. SUPPLEMENTARY CONTOUR INTERVAL 50 METERS. 1927 North American Datum and National Geodetic Datum of 1929.

Metal Mining

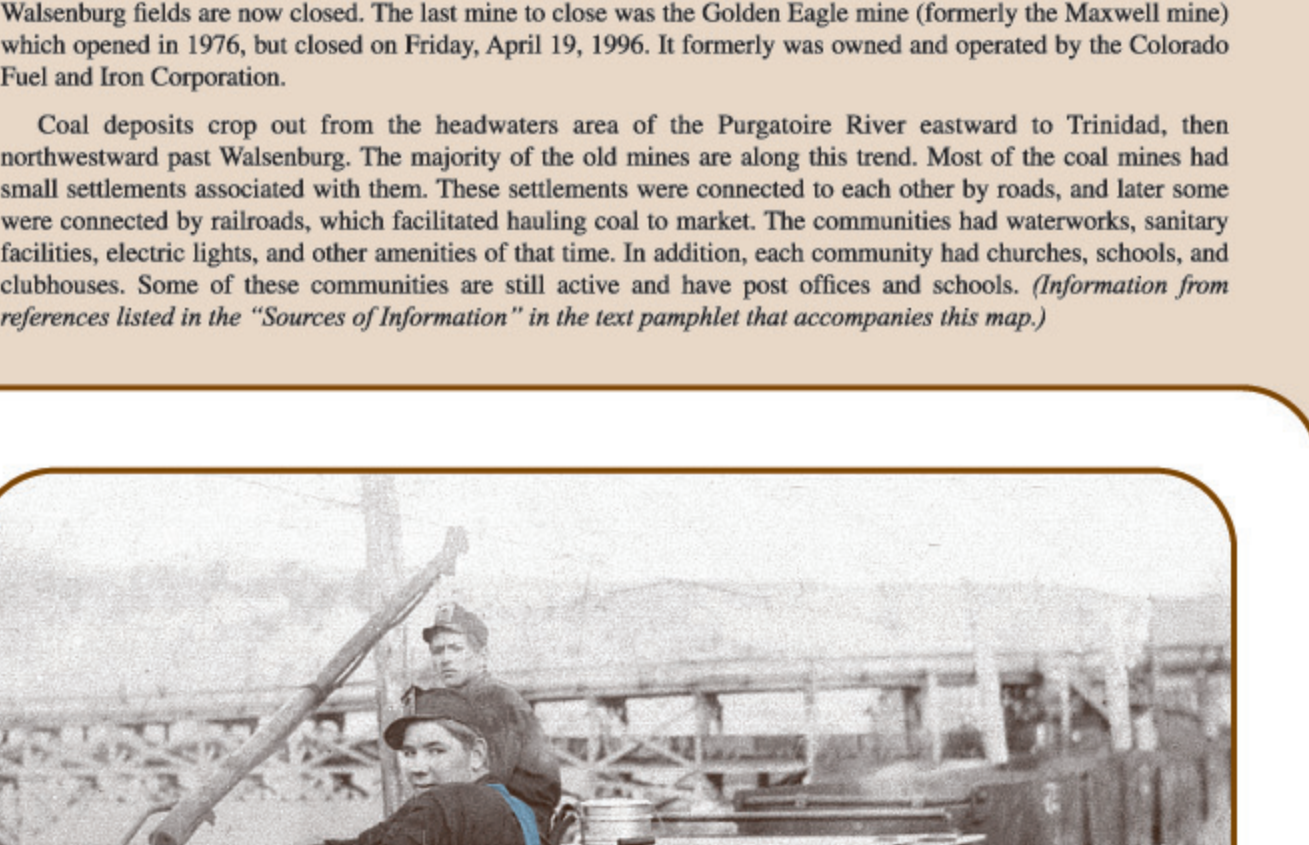
There are no large metal mining districts in the Trinidad quadrangle. However, prospectors found some hidden and gold placer deposits...



Four miners, one pushing a wheelbarrow full of dump rock, pose near the entrance to the Pimento gold mine on Rio Secco Creek near San Luis in the San Luis Valley. A box of dynamite, hammer, and other miner's picks are also visible. Photograph by O.T. Davis, 1914. (X-0770)

Coal Mines

Coal mining in southern Colorado started about 1864. However, very limited amounts of coal were mined as early as 1864...



This young coal miner sitting on the train at one of the Pimento coal mines in Las Animas County. Photograph by unknown, between 1900 and 1920. (X-0570)

The Ludlow Massacre

In 1913, the United Mine Workers of America (UMWA) attempted to organize the coal miners of John D. Rockefeller's Colorado Fuel and Iron Corporation of southern Colorado...



(ABOVE) Note from striking coal miners as Undersecretary Jack McGuire in the warehouse during the Ludlow coal strike. Note written in 1913 or 1914. (X-0079)

Mexican Land Grants

The Mexican government in the 1820s was concerned about threats from Texas to acquire the land between the Arkansas River and the Rio Grande...



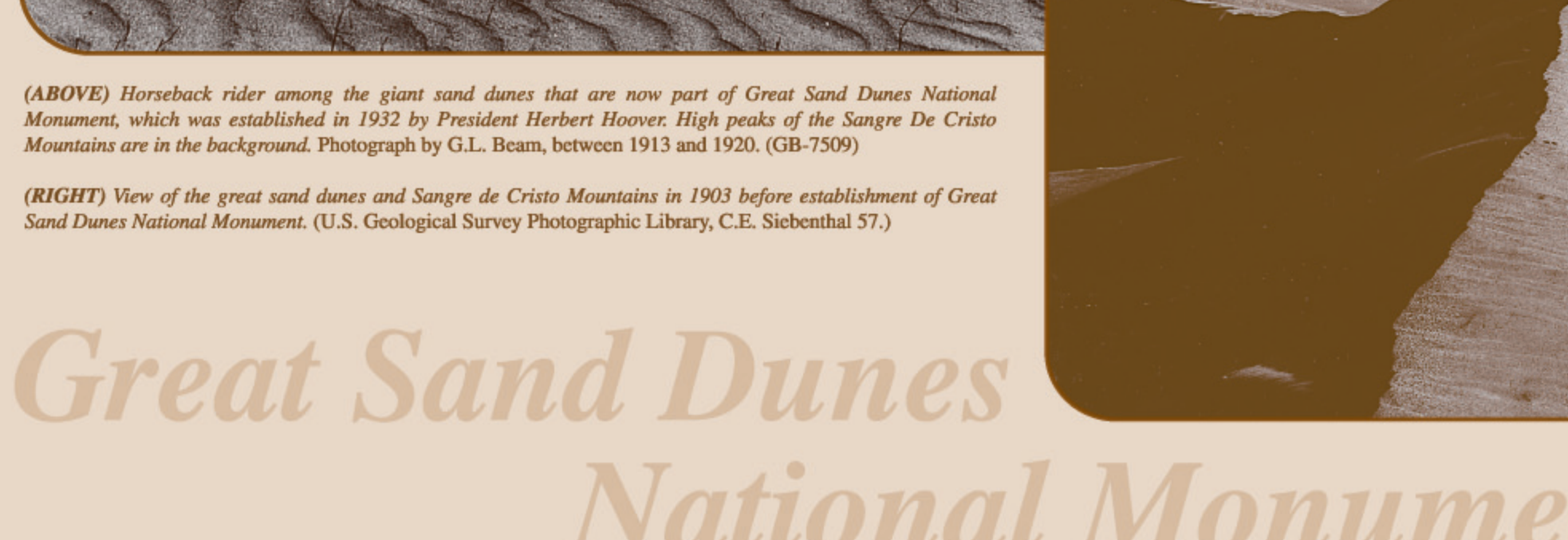
Entrance to the Luis Maria Baca No. 4 Grant, near Corona, in the San Luis Valley, Colorado. Photograph by M.S. Wells, 1942. (X-0550)



Map showing the extent of the Mexican Land Grants in what is now southern Colorado and northern New Mexico, as of June 21, 1840. Major 1848-1849 the area encompassing what is now the southwestern U.S. (Utah, New Mexico, Arizona, southern California, and southern Colorado) belonged to Mexico.

(ABOVE) Historical photo showing the great sand dunes that are one part of Great Sand Dunes National Monument, which was established in 1932 by President Hoover. High peaks of the Sangre de Cristo Mountains are in the background. Photograph by G.L. Stearns, between 1913 and 1915. (GB-700)

(RIGHT) View of the great sand dunes and Sangre de Cristo Mountains in 1893 before establishment of Great Sand Dunes National Monument. (U.S. Geological Survey Photographic Library, C.E. Sillwood 57.)



Great Sand Dunes National Monument and Preserve

These fascinating dunes occupy about 60 square miles of the eastern part of the San Luis Valley where they extend about 10 miles north to a maximum height of over 300 feet...

Photographic credit: Photographs are courtesy of the Denver Public Library, Western History and Geology Department. Additional assistance from members of the Central Publishing Group. Manuscript prepared for publication, May 15, 2001. ISBN 0-8429-5797-0