

GUIDE TO NUMBERED FEATURES

COMMERCIAL AND INDUSTRIAL

Number	Grid Reference	Name
3	8651	Eagle Supermarket
4	8649	Marche de Petionville
8	8649	Promobank
9	8355	Societe Nationale des Parcs Industriels (SONAPI)
10	8452	Societe Textile ACRA S.A. (SOTEXA) (clothing manufacturer)
11	8453	Sogebank
12	8549	Stations service National (gas station)
13	8656	Stations service National (gas station)
14	9053	Stations service National (gas station)
15	9153	SunAuto (auto dealership)
16	8649	Unibank

DIPLOMATIC FACILITIES

25	9054	New US Embassy Compound
26	8551	Ambassade du Canada (Canadian Embassy)
36	8455	MINUSTAH (Chinese PFI)
37	8451	Residence d'Ambassadeur des Etats Unis d'Amerique (U.S. Ambassador's Residence)

GOVERNMENT BUILDINGS

44	9050	Academie de Police (Haiti National Police (HNP) Academy)
51	8554	Commissariat Delmas 33 HNP (police)
52	8650	Commissariat Delmas 62 HNP (police) (operational)
56	9050	Ecole de la Magistrature (EMA)
59	8555	Haiti National Police (HNP) de Aeroport (police)
61	8648	Haiti National Police (HNP) Petionville (operational)
62	8648	La Mairie de Petionville (town hall)
76	8451	Ville d'Accueil (La Bureau du Premier Ministre)

HOSPITALS

84	8649	Centre de Sante Eliazar (medical center)
85	8454	Grace Children's Hospital (pediatric hospital)
88	8750	Hopital de la Communaute Haitienne
90	8752	Hopital Capor (hospital)
93	8549	Hopital Saint Damien pour les Enfants (pediatric hospital) COMPLETELY DESTROYED
97	8756	MINUSTAH Argentina Hospital (operational)
98	8955	Saint Damien de Chateaublond (hospital) (operational)

SCHOOLS

105	8648	Ecole des Freres de Petionville (FIC) (school)
106	8749	Ecole Souef Etienne
110	8453	Institution Saint Louis de Gonzague (main campus)
114	8648	Lycée National de Petionville (school)
117	8551	Quisqueya Christian School
118	8550	SOPUDEP (Organization for the Socioeconomic Development of Petionville) School
119	8549	Union School
121	8854	Universite de Tabarre / MINUSTAH Brazilian HQ
122	8954	Universite de Tabarre / MINUSTAH Brazilian HQ

UTILITIES

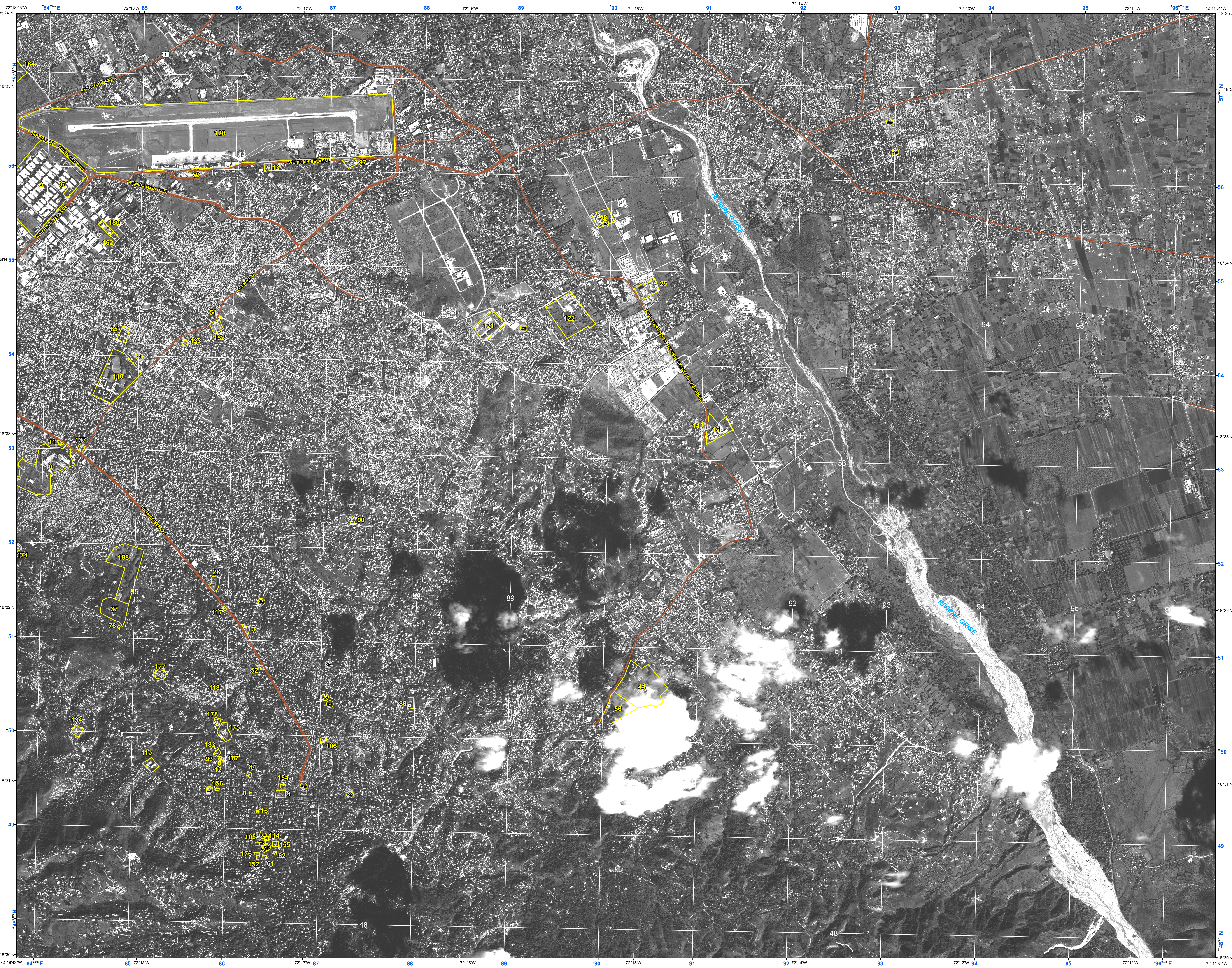
128	8556	Aeroport International Toussaint Louverture (Port-au-Prince International Airport)
132	8554	Sous station de peligre (substation)
133	8554	Sous station de peligre (substation)
134	8450	Sous station de peligre (substation)
137	8453	Television Nationale d'Haiti (TNH) (television station)

PLACES OF WORSHIP

152	8648	Eglise Saint Jacques (church)
154	8649	Eglise St-Jean Bosco (church)
155	8648	Eglise St-Pierre (church)
156	8649	Eglise St-Therese (church)

MISCELLANEOUS

162	8455	Visa Lodge (hotel)
164	8357	Athletique d'Haiti (sports academy)
174	8351	Hotel Christophe (hotel)
175	8650	Hotel El Rancho (hotel)
176	8648	Hotel Kinam (hotel)
177	8550	Hotel Montana (hotel)
178	8550	Hotel Villa Grezia (hotel)
180	8455	Joe Etienne Tennis Academy (JOTAC)
183	8549	Le Ritz Kinam II (hotel)
187	8649	Peace Corps
188	8451	Petionville Club



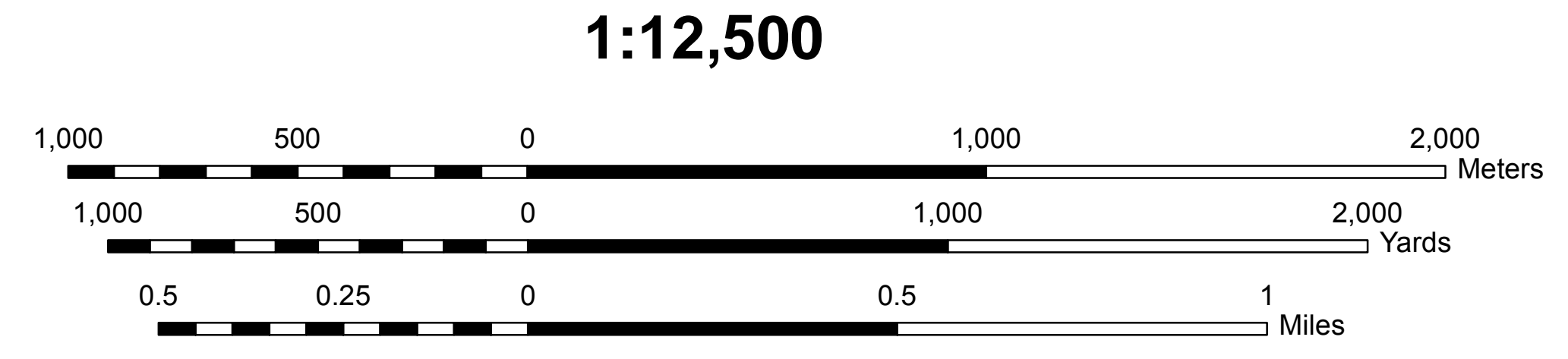
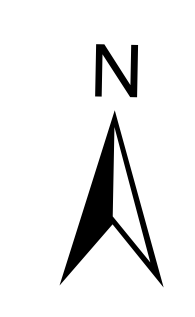
Prepared and published by the National Geospatial-Intelligence Agency
MAP INFORMATION AS OF 2009

LEGEND

	Guide to Numbered Features
	Main Roads
	Major Roads

LANDMARK FEATURE KEY

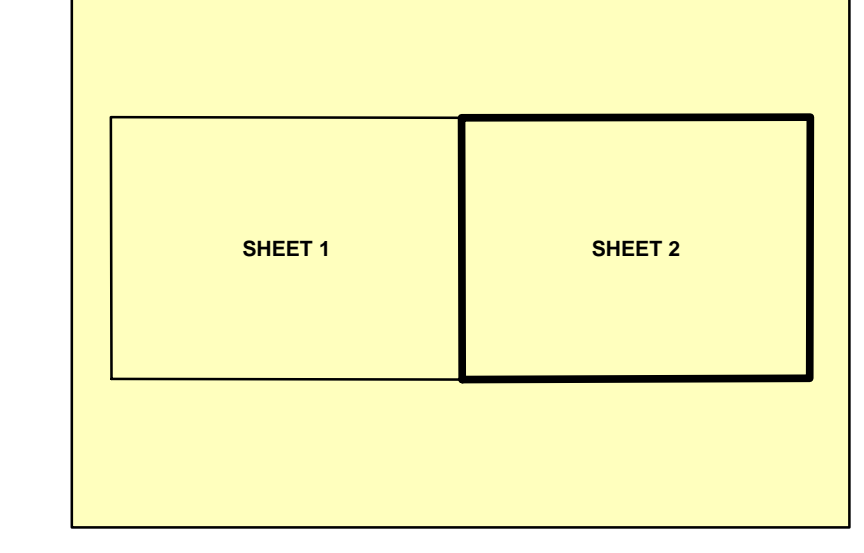
	Athletic field
	Cemetery
	Church
	Monument
	School



ELLIPSOID.....WORLD GEODETTIC SYSTEM 1984
 GRID.....1900 METER MGRS ZONE 18 Q Y F
 PROJECTION.....UNIVERSAL TRANSVERSE MERCATOR ZONE 18N
 VERTICAL DATUM.....MEAN SEA LEVEL
 HORIZONTAL DATUM.....WORLD GEODETTIC SYSTEM 1984

USERS SHOULD REFER CORRECTIONS, ADDITIONS, AND COMMENTS TO THE NSA ENTERPRISE SERVICE DESK: 1-800-455-0899; COMMERCIAL 301-227-9811; DSN 287-8811; UNCLASSIFIED EMAIL: ENTERPRISESERVICECENTER@NSA.MIL; SIPRNET: ESC@NSA.NGA.MIL; OR WRITE TO DIRECTOR, NATIONAL GEOSPATIAL-INTELLIGENCE AGENCY, ATTN: ESC, MAILSTOP D-240, 4600 SANGAMORE RD, BETHESDA MD 20816-5003

ADJOINING SHEETS



WARNING
 This product is suitable for planning purposes only and is not to be used for targeting or navigation.

NOTE
 Boundary representation is not necessarily authoritative.

NOTE
 Imagery Date January 13, 2010
 Copyright © GeoEye 2010, DigitalGlobe 2010

NOTE
 Imagery Date January 13, 2010
 Copyright © GeoEye 2010, GeoEye 2010

NOTE
 Proper names on this product do not conform to standard NGA product specifications or U.S. Board on Geographic Names standards.

CITY LOCATION

